



INNOVATE  
DUBLIN



# OUR ENTREPRENEUR & SOCIAL ENTREPRENEUR PACKAGE FOR YOU

SPACE ALONE IS SIMPLY SPACE,  
WHAT TURNS OUR SPACE INTO A  
DYNAMIC COMMUNITY IS YOU!

Your Social Innovation Hub

Civic Office  
Main Street  
Ballymun  
Dublin 9  
01 842 3612

Email: [Annabelle@innovatedublin.org](mailto:Annabelle@innovatedublin.org)

Visit our website:

<http://www.innovatedublin.org/social-innovation-hub>



INNOVATE  
DUBLIN



## HUBBERS PACKAGE: Entrepreneurs & Social Entrepreneurs

### *Welcome to the Innovate Dublin Hub*

We are a co-working space for a community of people from different professions and backgrounds who are taking action to drive positive change. They may be entrepreneurs, social entrepreneurs, techies, creatives, students, professionals and many more-- anyone making a solution for a better world.

Our Hub is a shared work space which is specifically designed to promote collaboration and innovation. It is development space and launch pad for those who wish to make a change, providing members with tools to accelerate their success. In particular, it provides social innovators with all the tools and trimmings needed to grow and develop new ventures; it is a place to access experience, knowledge, finance and markets and it a place for making connections.

Part innovation lab and part business incubator, we offer members a unique ecosystem of resources, inspiration, and collaboration opportunities to grow. We look to help people connect with, learn from and help each other to realise their ideas for a better world.

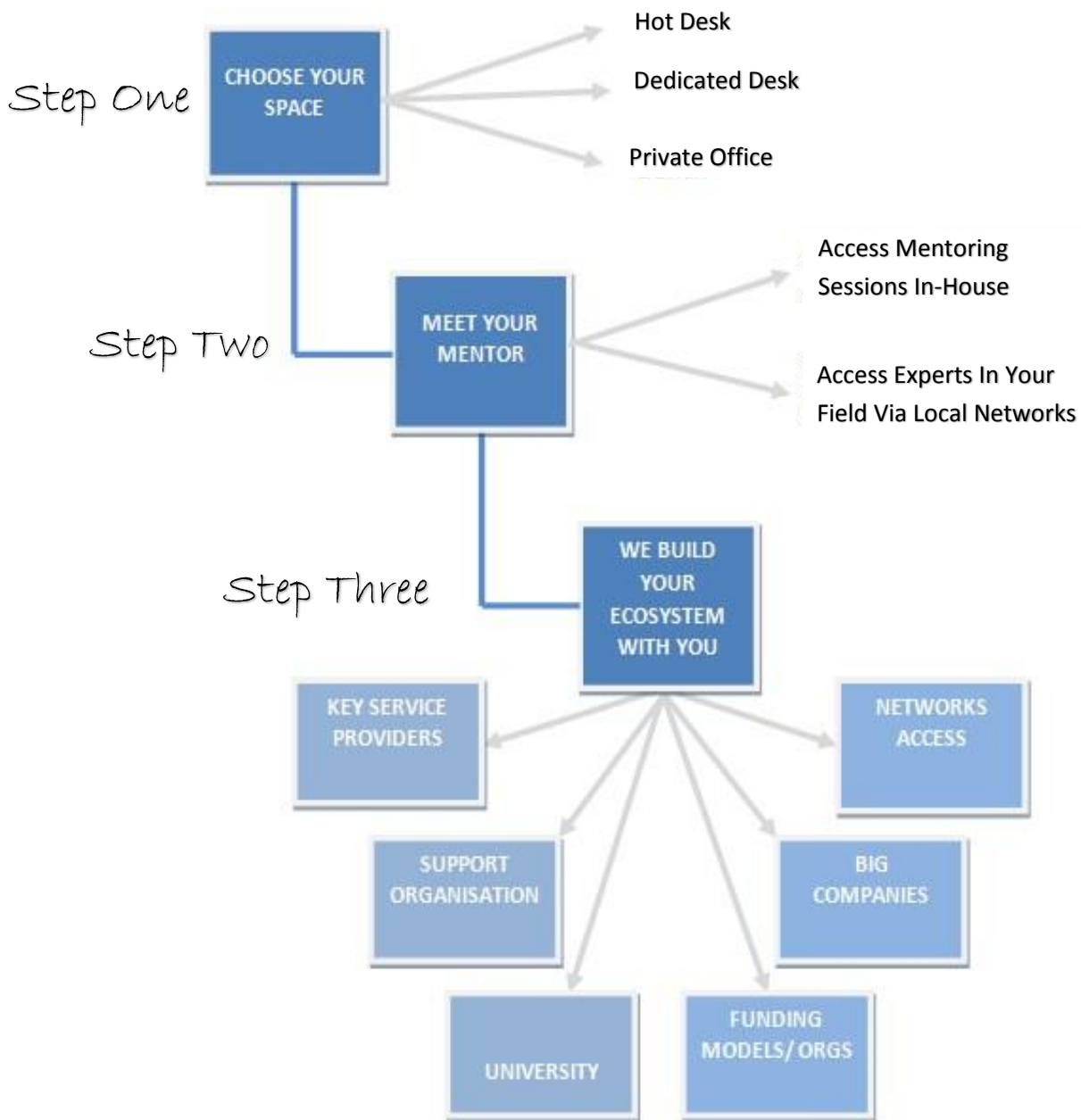
The Hub offers members access to 350 square meters of creative space to work, meet, learn, collaborate and play. We combine the best of a cafe, innovation lab, business accelerator, and serviced office to create a place for meaningful encounters, productive work sessions and inspiration.

Membership gives you a professional office right in the centre of Ballymun and only 7 kilometres from Dublin city centre.

Details on the various membership packages we offer can be found on page 6.



# HUBBERS PACKAGE: Entrepreneurs & Social Entrepreneurs





INNOVATE  
DUBLIN



## HUBBERS PACKAGE: Entrepreneurs & Social Entrepreneurs

### OUR OFFERING TO YOU

*You can avail of all the member benefits (see below) or just make our space yours (see packages on page 6).*

#### *STEP ONE: Choose your space*

We have a variety of work spaces for you to choose from. See P6 for details.

#### *STEP TWO: Meet your mentor*

Each Hubber will be offered mentoring sessions with one of our experienced business mentors. All our mentors have experience in setting up and running businesses so they understand the challenges and frustrations involved. Your mentor's sole focus is to support you in whatever areas you require to ensure your business idea grows into a successful enterprise. You choose what you want to focus on which could include some of the following areas:

- Sales and marketing (including preparation for sales presentations)
- Strategic planning
- Financial management
- Business development (including expansion and diversification)
- Resourcefulness and resilience
- Self confidence
- Good organisational tools including time management and project management
- Application for financial loans

#### *STEP THREE: Build your ecosystem*

What is your ecosystem of support and what is available. Supports include:

- *Enterprise Agencies & Services*

In formation with local agency supports: Partnerships, LEOs, Enterprise Ireland, Department of Social Protection.



INNOVATE  
DUBLIN



## HUBBERS PACKAGE: Entrepreneurs & Social Entrepreneurs

- *Financial Management*

Relationships with various financial advisory bodies including local bank branches, for initial one to one discussions.

- *Funding (direct and indirect)*

Information on access to funding to meet you and your business needs and connections made.

- *Network Access*

Introduction to relevant business networks including Ballymun4Business, North Dublin Chamber of Commerce, Dublin City Chamber, LEO Dublin City Women in Business Network, Irish Social Enterprise Network.

- *Strategic & Operation Development*

Business planning, strategic planning and operational development planning will be supported in-house through our trained Hub team.

- *Lunchtime Learnings*

Once a month sit together at lunchtime with your fellow Hubbers to learn about various interesting topics related to growing your business.

- *Your Community Impact (optional)*

Whether you are an IT expert and can fix one PC a month for an individual in the community or you can give a few hours to a local school on your experience in business, all we ask is that you consider giving something back to our community up to a few hours each month.



INNOVATE  
DUBLIN



## HUBBERS PACKAGE: Entrepreneurs & Social Entrepreneurs

### Our Packages

Hot Desks and Special Offerings for under 25s are charged at a daily rate. Desk Nodes and dedicated desks must be booked for a minimum of one month. All other membership contracts are for a minimum of 6 months. 30 days notice is needed to cancel or change your tariff.

Membership packages	Hot Desk	Dedicated Desk	Desk Node (4 desks)	Offices	Special Offerings for U25s
Use of work space	Book per day	Minimum 1 month	Minimum 1 months	Minimum 6 months	Book per week
Access to HubNet	✓	✓	✓	✓	✓
Free access to SME support services and events in Hub	✗	✓	✓	✓	✓
Free mentoring	✗	✓	✓	✓	Negotiable
Free meeting rooms	✗	✓	✓	✓	✗
Discounted events space	✗	✓	✓	✓	✓
Complimentary tea and coffee	✓	✓	✓	✓	✓
Business address	✗	✓	✓	✓	✗
Dedicated phone line	✗	Free line rental.	Free line rental.	Free line rental.	✗
Dedicated Storage	✗	✓	✓	✓	✗
Price €/month	€10 per day	€192	€768	€660	Negotiable

### Special offerings \_\_\_\_\_

If you are under 25 years old or are receiving support from social welfare, please call us to discuss your requirements and we will work with you to try and come up with a package to meet your needs.